

Helping people feel good

bpl

A woman with long brown hair, wearing a black tank top and red leggings, is lifting a barbell in a gym. She has a determined expression with her mouth open. A male trainer with a beard, wearing a black t-shirt with 'your space' written on it, is spotting her. The gym has various equipment and a staircase in the background. A large teal circular graphic is overlaid on the left side of the image.

Trustee & Non Executive Director Recruitment Pack

Welcome

We are pleased to invite you to consider the opportunity to become a Trustee or Non Executive Director and help guide the development and delivery of sport and leisure in our region.



Our Purpose

Helping people feel good

We're a bold, commercially astute, people powered organisation that creates innovative, fun & supportive solutions which make people feel good.

Through the last few years the Trustees and Non Executive Directors of BPL and our partner councils have realised that it is only through greater co-operation that we can maximise our joint impact upon improving the health inequalities in our communities and develop mutually beneficial asset strategies for our facilities.

Our 2030 strategy looks towards our future trusted partnerships to address these issues and firmly aligns our business strategy with our major local strategies, especially Barnsley 2030 and Bassetlaw Vision 2040.

BPL has an ambition to become a **force for good** in our communities, especially by realising our role in improving healthy life expectancy. A challenge that will require a co-operation and need new innovative health and wellbeing solutions to be developed and additional capacity also created. Demand for Health and Fitness is also expected to increase significantly by 2030 and BPL has ambitions to capitalise on this opportunity by seeking capital investment to enable our continued growth,

whilst also helping to address the dilapidation and carbon wastefulness of our existing facilities. We currently produce over 2,000 tonnes of CO₂e per year and will need to significantly reduce this consumption to meet our net zero targets.

To achieve these ambitions, we will need to continue to improve our ability to be bold and quickly adapt. This will only come through our people. BPL have already made great strides in becoming a people powered organisation with strong values aligned to our brands, and it is through our people that will enable us to deliver our ambitions.

A true trusted partnership approach will help develop an unrivalled collaborative advantage that is regenerative and distributive, keeping funds locally for reinvestment towards a better future.

BPL want to be a bold, trusted partner, that creates innovative, fun, and supportive solutions and add value by bringing spaces to life with our new clear purpose of **"Helping people feel good"**.

Our Story

Established in 1999


Barnsley Premier Leisure (BPL) is a charitable trust which now operates twelve venues across Yorkshire and Nottinghamshire and employs over 500 people.

Our independence has enabled us to become commercially viable, diversifying our business and developing differentiated brands based on strong values. Today BPL provides not only fitness and swimming but also golf courses, visitor attractions, catering and events. This model brings income of £20M and enables reinvestment of

over £2.5M per year and enables us to make more people feel good. Our trading company, Barnsley Premier Leisure Trading Limited (BPL Trading), is the commercial arm of our charity. It was set up to trade on behalf of BPL and raise funds for the charity. BPL Trading operates the more commercial elements of our business, such as Hospitality, Food, and Beverage.

Our venues:

 **Barnsley Metrodome**
(including Calypso Cove and Your Space Metrodome)

 **Your Space
Dearnside**

 **Your Space
Pontefract**

 **Kilton Forest
Golf Course**

 **Dorothy Hyman
Sports Centre**

 **Your Space
Royston**

 **Hillies
Golf Course**

 **Your Space
Hoyland**

 **Your Space
Retford**

 **Your Space
Bircotes**

 **Your Space
Mansfield**

 **Your Space
Workop**

How we add value:

We're a people powered organisation, that adds value by bringing spaces to life through our talented team of employees, living our three values every day.

We're different:

We bring spaces to life!



Fun & Friendly

One team looking after each other and our local communities.



Local

A feel good place to work – making a difference to people's lives every day and we have fun along the way.



Innovative

Always looking for better – a chance to grow and develop to become the best version of ourselves.

Our Business Model:

A force for good

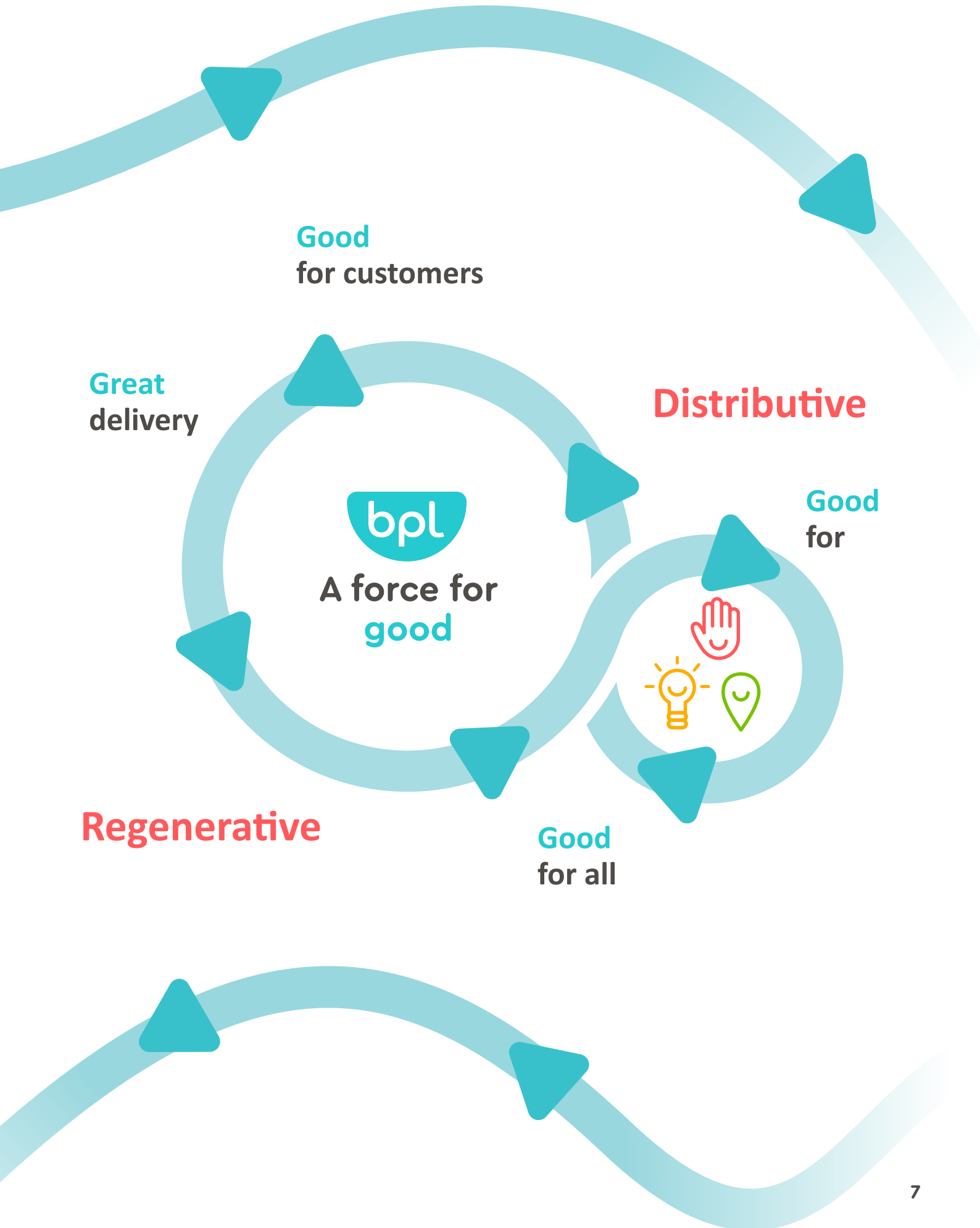
We call our business model 'A Force For Good' as it highlights the infinite nature of our regenerative not for profit charity.

Our business model shows how we add value. We're a people powered organisation and through being **Good for Employees**, and ensuring that it's a good thing working for BPL, we know that we will be **Good for Customers** by bringing our spaces to life.

Through **Great Delivery** we will ensure sustainable growth and efficiencies are sought to enable long term financial success. By being **Regenerative and Distributive** by design we can ensure our successes are reinvested back for our purpose, **helping people feel good.**

By delivering these we can ensure that we are Good For All our local communities.

A Force For Good



Can you help us make people feel good?

Who do we need

The Board of Trustees and Trading Board are seeking passionate individuals who can provide strategic advice, support, and industry expertise to lead discussion, empower decision-making and drive new initiatives.

We are seeking to appoint based on experience and skills within one or more of the following:

- Equality, Diversity & Inclusion
- Human Resources
- Risk Management
- Financial Management
- Health, Safety & Environment
- Strategic Business Planning
- Governance
- Marketing and Communications

Commitment

The role is voluntary, and prior experience as a Trustee or Non Executive Director is not necessary. Travel expenses will be paid. Each term of office is 3 years, at which point Trustees are given the option to stand for re-election or resign from their role.

Our Trustees and Non Executive Directors are asked to commit to a minimum of 6 bi-monthly board meetings each year. Trustees may also be invited to join an additional subgroup depending on their area of expertise.

Role Description

Overall Purpose

As a member of the Board of Trustees or a Non Executive Director you will be responsible for overseeing the operation of all BPL Facilities or BPL Trading Services, ensuring that we meet our charitable obligations as well as contributing to the success of the business.

Responsibilities

As a Trustee or Non Executive Director you must be able to attend bi-monthly board meetings to contribute to the group through your knowledge of the leisure industry or other commercial organisations in maximising opportunities available to ensure the ongoing success of BPL.

Use your extensive networking experience of local and regional organisations and businesses to make contact to promote what we offer as a Company to the Region.

Ensure that BPL complies with its governing document, charity law, company law and any other relevant legislation or regulations.

Ensure that BPL pursues its objects as defined in its governing documents.

Ensure that BPL applies its resources exclusively in the pursuit of its objectives.

Through your previous experiences in working at a strategic level, contribute actively to the Board's role in giving firm strategic direction, setting overall policy, defining goals, setting targets and evaluating performance against agreed targets.

As a Trustee or Non Executive Director you should use any specific skill, knowledge or experience to help the board of trustees to reach sound decisions. This may involve scrutinising board papers, leading discussions, focusing on key issues, provide advice and guidance on new initiatives, or other issues which a trustee has special expertise.

Safeguard the good name and values of the company.

From experience of understanding financial management procedures and budgetary control, ensure the financial stability of BPL.

Assist and monitor the performance of the Chief Executive of BPL.

As a Trustee or Non Executive Director you should use any specific skill, knowledge or experience to help the Board to reach sound decisions. This may involve scrutinising board papers, leading discussions, focusing on key issues, provide advice and guidance on new initiatives, or other issues in which you have special expertise.

How to Apply

For further information or an informal discussion please contact Steve Lodge, Company Secretary by emailing headoffice@bpl.org.uk. The Company Secretary will arrange a suitable time for a telephone call with you.

To apply, please submit your letter of application and CV also by emailing HeadOffice@bpl.org.uk

We ask that in your application you outline how you meet the role description, provide details of your career to date, relevant experience and why you want to be part of Barnsley Premier Leisure.

More information about BPL can be found on the website at www.bpl.org.uk

